

DESCRIPTION

XT HORIZ 56C CLOSE COUPLED MOTOR PUMP ASSEMBLY

REF. NO.

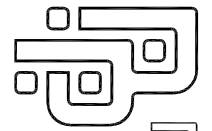
O-XTH-CF

DATE

1/28/93

REV.

B

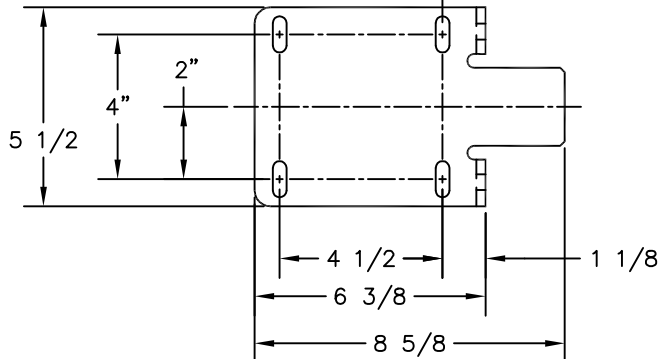
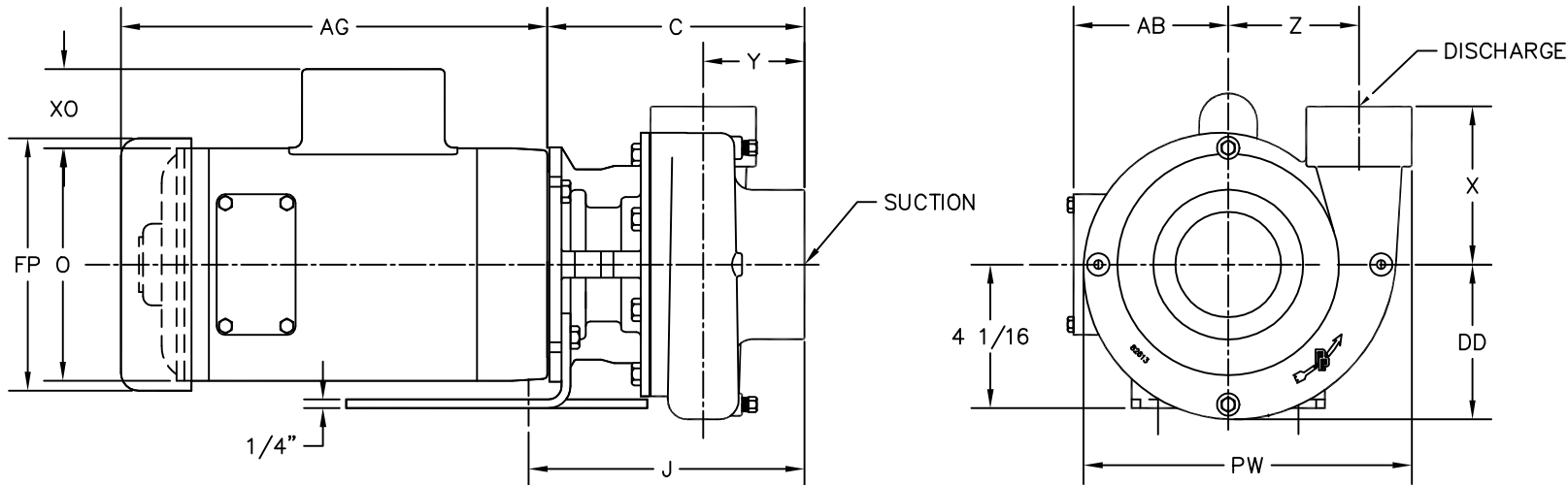


PRICE PUMP CO.

FACTORY FAX TRANSMITTAL DRAWING

#1 Pump Way P.O. Box Q  
Sonoma, CA 95476 (707) 938-8441  
707-FAX 938-0764

	PUMP END DIMENSIONS								
	C	DD	PW	J	X	Y	Z	SUCTION	DISCHG
XT100	6 5/8	4"	8 3/8	7 1/8	4"	2 3/8	3 1/2	1-1/2"	1"
XT150	7 9/16	4 1/8	8 3/4	8 1/16	4 1/4	3 1/4	3 5/8	2"	1-1/2"
XT200	7 5/16	4 7/16	9 5/16	7 13/16	4 1/2	2 7/8	3 3/4	3"	2"



HP	RPM	FRM	MOTOR END DIMENSIONS				
			AG	AB	FP	O	XO
1/4	1800	56C	7 3/4	4 1/2	6 1/8	5 3/8	2 1/16
1/3	1800	56C	8 1/4	4 1/2	6 1/8	5 3/8	2 1/16
1/2	1800	56C	8 3/4	4 1/2	6 1/8	5 3/8	2 1/16
1/3	3600	56C	8 1/2	4 1/2	6 1/8	5 3/8	2 1/16
1/2	3600	56C	8 3/4	4 1/2	6 1/8	5 3/8	2 1/16
3/4	3600	56C	9 1/4	5 1/4	6 1/8	5 3/8	2 1/16
1	3600	56C	9 3/4	5 1/4	6 1/8	5 3/8	2 1/16
1 1/2	3600	56C	10 1/2	5 1/4	7 3/16	6 7/8	2 1/4
2	3600	56C	11 1/8	5 1/4	7 3/16	6 7/8	2 1/4
3	3600	56C	12 3/8	5 1/4	7 3/16	6 7/8	2 1/4
5	3600	184C	13 5/8	5 1/4	8 1/2	7 7/8	2 1/4

NOTES:

1. MOTOR DIMENSIONS WILL VARY BY MODEL AND MAKE, DIMENSIONS ARE TO BE USED FOR REFERENCE ONLY.
2. DIMENSION "XO" APPLIES TO SINGLE PHASE MOTORS ONLY.
3. ALL DIMENSIONS ARE ROUNDED TO THE NEAREST 1/8 INCH.